



Kentucky Chapter G

GWRRRA

"FRIENDS FOR FUN, SAFETY, AND KNOWLEDGE"

OCTOBER 2022

Up Events

WINGS OVER THE SMOKIES

A few G members participated in Wings over the Smokies. They stayed at Route 19 Inn, which has retro décor. Yep, I remember tile like that! Who remembers needing coins to make a call? The weather wasn't ideal, but they had a great time.



B-toberfest

Chapter G held their annual end of year camping and picnic at Big Bone Lick Park. Thanks Leah Cridlin for organizing another great G event. Some camped for the weekend, while others came down throughout the weekend to join us. Our picnic was Saturday and the food was endless. For those that camp, breakfast both Friday and Saturday was unending. At the picnic, there were games and here are the winners.

**Game —German Trivia
Winner– Rick Artmayer**



**Game —Stack the Beer Mugs
Winner– Courtney Beckham
(Chris Davis' daughter)**



**Game —Hot Chicken—Chicken
Dance
Winner—Lockett Beckham (Chris
Davis' granddaughter)**



**Game —Beer Pong
Winner– Joyce Quire**



**Game —Pin the Foam on my
Beer
Winner— Cody Beckham (Chris
Davis' son-in-law)**



**Game —Pretzel Making with
Playdoh
Winner— Melissa Eicher**



G-toberfest

Pictures of G-toberfest for all to enjoy.



S P O N S O R!

HAPPY TRAILS!!



I like to hike. If you know me, I'm sure you already know that. When I go, I like to pick challenging hikes; ones that the casual hiker wouldn't dare choose. I like to test my abilities, personal strengths, and mental problem solving skills.

On the surface, a hike is just a walk in the woods, literally, but when you're out in the woods, or climbing the side of a mountain, it certainly becomes so much more. To me a good hike is one that is well marked, but not always obvious. There should be amazing scenery, a good amount of difficult terrain, and always a little bit of doubt that you are on the right path.

While in Maine this past summer, I took an incredible hike. My route was originally to start at the top of Cadillac Mountain and descend to the campground at the bottom. It would have been a good path, but the more I looked at the trail map, the more I wanted to explore. I did end up starting at the top of Cadillac Mountain, but I changed my path to link 7 trails together, hitting the peak of three mountaintops, circling two lakes, and taking in parts of two trails including the Acadia ladders. It was an awesome day. The weather was perfect, and the scenery was incredible. The trails were marked with blue painted lines strategically placed and cairns, which are stacks of stone that point you in the right direction.



As I hike, I reflect on my life: where I've been, how I got here, and where I really want to go. This year as I hiked, it became overwhelming obvious that trails are a lot like life itself. We choose a path and start to follow it. There are "markers" along the way to point us in the right direction. Sometimes we notice them and follow, and sometimes we may not

see them, or choose to ignore them. Many times, the latter will cause us to backtrack and search for our correct path, and sadly, sometimes we cannot find it, and end up lost. A good path will yield enough challenges to keep us feeling alive, and enough scenery to make it all worth-while.



Sponsor!

HAPPY TRAILS!!

As motorcycle riders, we challenge our skills every time we sit in the saddle. Knowing and practicing the proper techniques, and making sure we are properly equipped keeps us on the right path and insure that we will safely make it to the trailhead of our choosing.



We never know what lurks around the bend, down that ladder, or past that big stone wall on the horizon. We have to choose our paths wisely and make good decisions no matter what the circumstance may be. We have to challenge ourselves to keep life exciting, and continuously be on the lookout for those markers to point us in the right direction. Picking the right path will lead us down happy trails, and make every day worth living.

I hope all your trails are happy ones!

Be Safe and HAVE FUN!!!!

--Donita Nardi

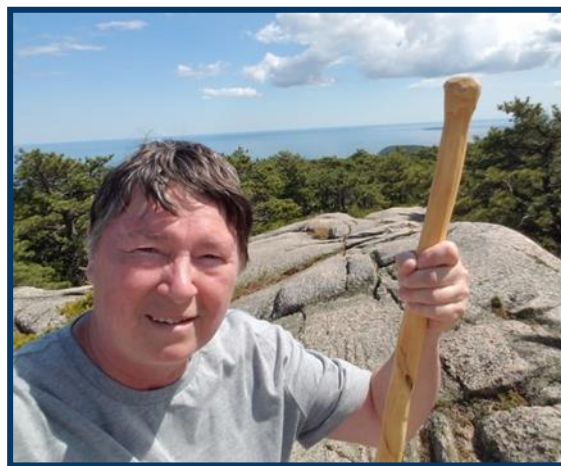


TABLE OF CONTENTS

PAGE	SECTION
<u>2</u>	<u>Chapter Director's Report</u>
<u>3</u>	<u>Special Events</u>
<u>4</u>	<u>Assistant Chapter Director's Report</u>
<u>5</u>	<u>Membership Enhancement Report</u>
<u>5</u>	<u>Treasurer's Report</u>
<u>6</u>	<u>Rider Education</u>
<u>7</u>	<u>Social Secretary</u>
<u>8</u>	<u>Awards/COY</u>
<u>9</u>	<u>Ride Coordinator Report</u>
<u>10</u>	<u>Chapter G Ride Schedule</u>
<u>11</u>	<u>Traveling Plaque/KY Chapter Meetings</u>
<u>12</u>	<u>Historical Highlights</u>
<u>13</u>	<u>Newsletter Editor</u>
<u>14</u>	<u>University Classes & KY District Events</u>
<u>15</u>	<u>Items for Sale</u>
<u>17</u>	<u>Advertisement</u>



TEAM G

OFFICERS

Chapter Team Directors Randy and Kim Pommier	859-466-1558 cd@chapterg.org
Assistant Chapter Director Donita Nardi	859-379-5141 acd@chapterg.org
Chapter Treasurer Luanne Williams	859-331-9475 treasurer@chapterg.org
Chapter Membership Enhancement Jerry and Luanne Williams	859-331-9475 mec@chapterg.org
Ride Coordinators Chuck and Judy Norris	859-586-7084 ridecoordinator@chapterg.org

STAFF

50/50 Coordinators Dean & Kim Hedger	859-743-2665 50-50@chapterg.org
Awards Coordinator Gary Heil	859-341-7484 awards@chapterg.org
Historian OPEN	history@chapterg.org
Motorist Awareness Coordinator Charlie Hobbs	859-534-1018 map@chapterg.org
Newsletter Editor Mary Eicher	859-630-1642 newsletter@chapterg.org
Pins & Patches Judy Norris	859-743-7707 pinsandpatches@chapterg.org
Social Secretary Rena Hobbs	859-534-1018 social@chapterg.org
Special Events Leah Cridlin	859-534-5292 speialevents@chapterg.org
Technical Educator OPEN	technical@chapterg.org
Webmaster OPEN	webmaster@chapterg.org
2022 Couple of the Year John & Mary Eicher	859-630-1642 coy@chapterg.org
2022 Individual of the Year Steve Poat	859-816-7628 joy@chapterg.org

Chapter Directors

Happy Halloween! It is the month where Ice Cream rides change to 6:00 p.m. and deer are beginning to look for love in all the wrong places; one of which could be in front of your motorcycle. So, ride safely especially on back roads and early evening. There are always dangers when riding and everyone needs to take a step back and evaluate how you are riding.

We are working on being independent while the organizations work through their issues on becoming an organization worthy of having Chapter G as members. We are following the current GWRRA Officers Handbook but making changes to meet our chapter's needs. If anyone has input on what changes they would like to see, please contact us.

As things slow down on the riding side of the Chapter, it is time to start planning for next year. The main Boone County Library has been reserved for our planning meeting on November 17, 2022, at 7:00 p.m. If you are not able to attend, please forward your suggestions to either Chuck or Judy Norris, or us and we will put your suggestions on the list. Those rides not chosen may become impromptu rides. We should have the impromptu list finished soon. Hopefully we will be able to use this before the snow flies. Everyone needs to pray for a long warm fall with good weather.

If you have any questions or concerns, please contact us. Until next month,



*Randy and Kim Pommier
Chapter Team Directors*

Special Events

The G Family Picnic, "Gtoberfest" is in the books! As our friend Dave Bouchard said, "We ate till we were tired and we slept till we were hungry." My goodness, there was so much food! There was no reason for anyone to go hungry last weekend. Even Sunday morning breakfast leftovers were more than needed! The G is blessed with great cooks!

Our picnic was a lot of fun, our games included Beer Pong, Joyce Quire won this game (hmmmm, Joyce?) Pretzel Making with Playdoh was won by Melissa Eicher, German Trivia was won by Rick Artmayer in a fierce tie-breaker, Foam my beer was won by Cody Beckham (Chris Davis' son-in-law) and Lockett Beckham (Chris Davis' granddaughter) won Hot Chicken Chicken Dance. I didn't participate, but there was a card game that became a little vicious. We could hear hootin and hollering across the campground. I have to investigate to see what this game is all about! We laughed, we played, we ate and socialized isn't that what a picnic is all about?

Unfortunately the projector didn't work for our GI Blues Movie with Elvis. Even Rick Artmayer's technical skills were challenged. We still watched on the laptop screen. Let me tell ya, for a 1960 movie it was beyond it's year. The popcorn and pretzels was delicious!

Mark your calendars for next year, September 16th. We will be back at it again. With who knows what kind of fun. But it will be fun!

Now it is time to get ready for the Christmas Party. The party will be December 3rd at Kellie's Homestead in Dry Ridge. Stay tuned for more details to be announced at the Chapter Gathering in October.

Remember the special events are only special because of you!



*Leah Cridlin
Special Events Coordinator*



Assistant Chapter Director

Was für ein tolles Picknick!

Or in English...What a great picnic! I would like to send kudo's out to Leah for presenting our Chapter with yet another fabulous end of season picnic. Our G-toberfest was so much fun, from the amazing food, to the awesome games, all the way down to the Elvis movie that closed out the evening. For the G campers, it was 4 days of bliss. We had group breakfasts, campfires, card games, and tons of camaraderie. It was great to have the entire loop at the campground all to ourselves. Charlie even planted a "Watch out for Motorcycles" sign right in the middle. It reminded me of what the moon landing would have been like. The picnic was so much fun, especially with all the games that Leah had come up with. Camping was very relaxing, except for the new game that Pam introduced. It was a cutthroat card game that revealed the playfully evil side of just about everyone who played. But it was fun to watch people transform. If you missed this event, I'm so sorry that you did, but there is always next year.

Big congratulations to Peggy Thornton, who won the Chapter Ride Challenge. We more than doubled our participation this year. Maybe next year we can do that again!!



Membership

Hello G Friends,

Fall is such a wonderful time of the year to ride along our beautiful Kentucky countryside. The trees are starting to change to beautiful fall colors of oranges, reds, and yellows. The temperature is comfortable to enjoy riding or just spending time outside with your G friends and family.

We are planning to camp and ride during these fall months before the cold weather arrives – enjoy this beautiful time of the year!!

Please contact us if any of your contact information has changed—we don't want you to miss anything. Also, if we are missing your birthday or wedding anniversary, please let us know so you can be recognized. If you have any questions or need assistance, please don't hesitate to contact us.

Jerry and Luanne Williams
Chapter G
Membership Enhancement
Program Coordinators
mec@chapterg.org



Treasurers

Hi Chapter G,

Congratulations to our winners from the September Get Together!! Jeff Hinkle won the \$10 "In Attendance Draw" this month. Tom Reilly won 1st place of \$36, Donita Nardi won 2nd place of \$22 and Pam Haines won 3rd place of \$15.

Thank you to all who participated at the September Gathering.

We want to thank Dean & Kim for doing a great job selling tickets at our September Gathering!! If it wasn't for Dean and Kim selling our tickets and our wonderful members and guests purchasing our 50/30/20 tickets, we wouldn't have the opportunity to do the fun events that we do each year.

Luanne Williams
KY District/Chapter Treasurers



Riders Education

It is already October, and football season is in full swing. Perhaps you like to go to your favorite tavern or sports bar to watch the game. Here is a reason to be wary next time you go. A panda walks into a bar and gobbles some beer nuts. Then he pulls out a gun, fires it in the air, and heads for the door. "Hey!" shouts the bartender, but the panda yells back, "I'm a panda. Google me!" and continues out the door. Sure enough, *panda*: "A tree-climbing mammal with distinct black-and-white coloring. Eats shoots and leaves."

This month I would like to present some information about the environmental concerns of our sport. As an outdoor activity, we are subject to all the critters Mother Nature has seen fit to provide. Some of these pests can cause irritation and distraction, but there are things we can do to lessen their impact on our fun.

Let's examine the Mosquito. Although science has yet to pinpoint what mosquitoes consider an ideal victim, there is a tremendous amount of research being conducted on what compounds and odors people exude that might be attractive to mosquitoes. But with four hundred different compounds to examine, researchers are just beginning to scratch the surface.

It's not dinner they are sucking out of you. While male mosquitoes do not bite people -- female mosquitoes bite us to harvest proteins from our blood to develop fertile eggs. People with Type O blood are bitten nearly twice as often as those with Type A, while people with all other blood types fall somewhere in the middle.

Mosquitoes locate their victims using an organ called a maxillary palp which detects the carbon dioxide in a person's breath from as far away as 164 feet. As a result, people who simply exhale more of the gas over time—generally, larger people—have been shown to attract more mosquitoes than others. This is one of the reasons why children get bitten less often than adults.

In addition to carbon dioxide, mosquitoes find victims at closer range by smelling the lactic acid, uric acid, ammonia, and other substances expelled via perspiration, and are also attracted to people with higher body temperatures. Strenuous exercise increases the buildup of lactic acid and heat in your body. Genetics also influence the amount of uric acid and other substances naturally emitted by each person. People with high concentrations of steroids or cholesterol on their skin surface attract mos-

quitoes. Pregnant women have been found to attract roughly twice as many mosquito bites as others, likely because they exhale about 21 percent more carbon dioxide and are on average about 1.26 degrees Fahrenheit warmer than others.

Other research has suggested that the type and volume of bacteria that naturally live on our skin affect our attractiveness to mosquitoes. This might be why mosquitoes are especially prone to biting our ankles and feet as these areas naturally have more robust bacteria colonies.

Just a single 12-ounce beer can make you more attractive because drinking alcoholic beverages increases the amount of ethanol excreted in perspiration, and it increases body temperature.

Mosquitoes use vision in addition to scent to locate humans, so wearing colors that stand out (black, dark blue or red) may make you easier to find.

To minimize your risk of being bitten, wear clothes that cover exposed skin. Insect repellants made with the chemical DEET have been proven effective to repel mosquitos. As a natural alternative, mosquito plants and citronella candles work well too.

In summary, if you are a Type O, exercising, pregnant woman in a black shirt, I suggest staying indoors. For the rest of us, stay clean, drink water, wear light colored clothing, and use an effective insect repellant. Be sure to stock the first aid kit on your bikes with itch relief for when these pests get past your best efforts of prevention.

Rick Artmayer
KY District Educator



Social Secretary

Chapter G would like to wish a very Happy Birthday and a Happy Anniversary to our members who are celebrating in the month of October.

If you have a birthday or anniversary in October that I have missed, please contact me so I can update my roster.



10/14	Troy Robinson
10/16	Howard Gaiser
10/16	Stan Caudell
10/26	Chris Davis
10/30	Bert Hanlin



10/02/82	Randy & Kim Pommier
10/10/70	Bob & Pam Thomann
10/28/71	Charlie & Peggy Thornton
10/29/76	Bert & Dreama Hanlin

If you have any information, for anyone who is sick or passed away that needs to be forwarded to our Chapter G family, please contact me at: social@chapterg.org or call me at (859) 534-1018.

Rena Hobbs
Social Secretary



Awards

October is usually a great month to ride, not too hot or not too cold. There are many opportunities to ride including the Chapter's Ride to Amish Country. When you are out riding be aware of wet leaves and roaming deer. If you are putting your bike in storage for the winter season, please note your ending odometer reading so you can forward it to me for the mileage contest.

*Gary, Darlene, Michelle &
Raven Heil
Awards Coordinator*



Couple of the Year

John and I would like to thank everyone who supported us in our quest for the KY District COY. Although, we weren't selected, it was a great experience. Smokey joined us for the Chapter G camping and picnic and made a couple of new friends.



*John & Mary Eicher
2022 COY*



Ride Coordinator

Hello Chapter G members and Friends.

When you read this, September will be past and summer will have officially ended. Riding season is beginning to fade away. This month we had members attend the Wings over the Smokies and we stayed at Route 19 Inn, a small retro motel. We shared the motel with a group of Harley riders down for Thunder over the Smokies. We had a nice time and got in a few good rides. Friday Night and Saturday morning were rainy, but we still enjoyed ourselves.

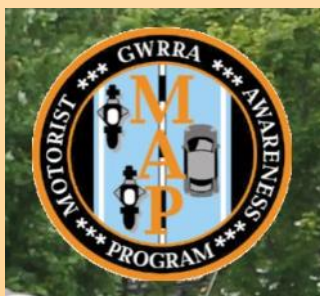
Oct. 8, 2022, 6pm—We will be doing our dinner ride at Biancke's 102 S Main St Cythiana KY. Please be sure to sign up at the meeting or contact Chuck and Judy.

Oct. 14, 15 & 16, 2022 - We will be visiting Millersburg and Berlin Area. The group will depart Friday Oct 14 from Crestview Town Center front parking lot. Meet at 8:15 & depart at 8:30. If you do not plan to ride with the group, please let Chuck or Judy know.

Chuck & Judy Norris
Ride Coordinators



Chapter G Ride Schedule



Ice cream rides begin the first Wednesday of April and continue every Wednesday thru the summer. Meet at Heritage Bank (8751 US 42, Union) at 5:45. Depart 6pm sharp.

October 2022

- **4th — Chapter Get-together**—American Legion Post 4, 8385 US-42, Florence, KY 41042. Eat at 6.00pm meeting starts at 7pm.
- **8th Dinner Ride— 6pm** - Biancke's, 102 S. Main St., Cynthiana, KY. Sign up at the meeting or let Chuck or Judy Norris know you want to attend.
- **10th—Columbus Day**
- **14th—16th—Amish Country Trip.** Travel there and explore Fri-Sat. Return home on Sunday. Staying at The Hotel Millersburg, 35 W. Jackson St., Millersburg, OH. Room are held under Judy Chapter G—330-674-1457. 1 Queen-\$99+tax, 2 Queen-\$139+tax, 1 King-\$139+tax. Go to hotelmillersburg.com and check out the unique features.
- **25th—Coordinators Meeting** - TBD
- **31st—Have a Happy Halloween**

November 2022

- **1st — Chapter Get-together**—American Legion Post 4, 8385 US-42, Florence, KY 41042. Eat at 6.00pm meeting starts at 7pm.
- **6th—Daylight savings time ends.**
- **11th—Veterans Day!** Make sure you Thank A Veteran today.
- **12th—Chapter Dinner Ride**—TBD (Belles 112 N Main St., Williamstown, KY 859-823-5140)
- **17th—Planning Meeting for 2023**—Tentative Location TBD.
- **24th— Happy Thanksgiving!**
- **27th—LaComedia Dinner Theater**—765 W Central Ave., Springboro, OH. We will be doing the Brunch show of "White Christmas". Arrive at 10:30am for

seating and buffet starts at 11:15. Show is at 12:30pm. Cutoff for tickets is October 21st. Cost is \$54/person. Signup at meetings and pay Leah by October 15th.

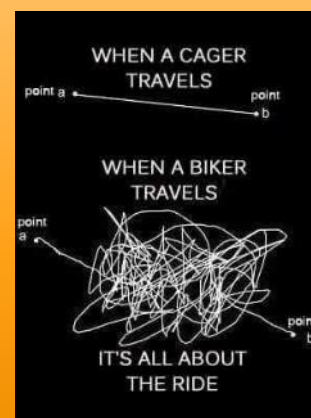
- **29th—Coordinators meeting**—TBD.

December 2022

- **3rd — Chapter Christmas Party** — Location will be at Kellie's Homestead Farmhouse, 1108 Fashion Ridge Rd., Dry Ridge, KY 41035. More details to come. Signup at meetings or contact Leah Cridlin, Special Events Coordinator.
- **6th— Chapter Social Gathering**—American Legion 6pm—8pm. Please bring a dessert or appetizer to share.
- **21st—Winter Begins**
- **25th—Merry Christmas to All!**
- **31st—Be Safe and have a Happy New Year!**

January 1, 2023 make sure to join us for our annual New Years Day Breakfast at Cracker Barrel, 1131 Fashion Ridge Rd., Dry Ridge, KY. Lets hope there is no snow above 32° so we can see some Bikes and Trikes. Good time to check out that new heated gear you asked for Christmas.

Please be sure to visit the website for current ride schedule —
www.chapterg.org/ride
[schedule](#)



Traveling Plaque

The Traveling Plaque promotes visitation between chapters. Each chapter has a chance to capture the plaque by attending the chapter meeting of the chapter who currently holds the plaque. Points are given at each meeting that your chapter attends. At the end of the year, at the KY Blast, the chapter with the most points, is awarded the plaque. Check on [KY District site](#) for updated information on meetings.

Chapter Meeting Schedule



Chapter A—Louisville

Meets the 2nd Saturday
Roosters, 10430 Shelbyville Road #7
Louisville, KY 40065
Eat at 11:00 am—Meet at 12:00pm



Chapter C—Lexington

Meets the 3rd Saturday
Roosters, 2640 Richmond Rd.
Lexington, KY 40509
Eat at 11:00am—Meet at 12:00pm



Chapter G — Northern KY

Meets 1st Tuesday
American Legion Post s4
8385 US Hwy 42
Florence, KY 41042
Social time 6:30pm—Meet at 7:00pm



Chapter K—Henderson

Meets 3rd Sunday
Golden Corral
1320 N Green St.
Henderson, KY 42420
Eat at 12:00pm—Meet 1:00PM (CT)



Chapter S — Elizabethtown

Meets 1st Sunday
Shoney's
1046 Executive Dr.
Elizabethtown, KY 42701
Eat at 4:00pm—Meet at 5:00pm



Chapter T — Paintsville

Meets 3rd Saturday
Giovanni's Pizza
261 Court St.,
Paintsville, KY
Eat at 5:00pm—Meet at 6:00pm



Chapter Y—Mayfield

Meets 1st Thursday
Majestic Family Restaurant
700 S 6th St
Mayfield, KY 42066
Eat at 6:00pm—Meet 7:00 (CT)

Historical Highlights

Congratulations to those who are celebrating their October
Chapter G Anniversaries



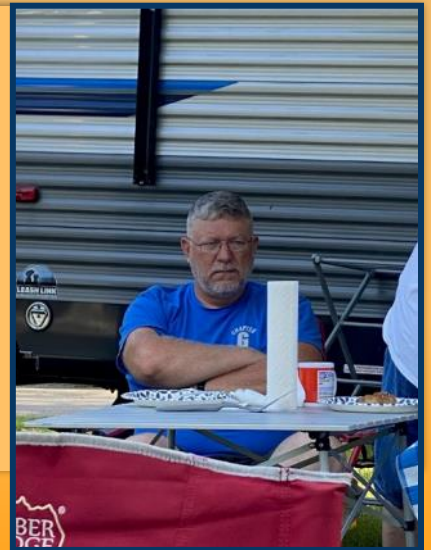
DEEP IN THOUGHT

So, what's he thinking? Your guess is as good as mine! Here's a few I came up with.

I really want to take his plate.

Wonder if they would miss me if I went in and took a nap?

Is it movie time yet?



From the Editor

If you have item (s) for sale, that you would like to include in the newsletter, please send me a picture, price and info.

We continue to acknowledge a "G" member each month in the newsletter in the Spotlight. This acknowledgement can be about a recent accomplishment, graduation, course completed, etc. Please send the information and be sure to include pictures. Any article and pictures need to be sent by the 20th of the month.

This newsletter is published to keep our members informed about Chapter G. If there is anything you wish to see in the newsletter, that is currently not appearing, please let me know and we will take it into consideration.

Mary Eicher
Newsletter Editor





Upcoming University Classes

Stay tune for upcoming classes



Upcoming KY District Events

June 2nd—3rd—Ride-in 2023 at Jenny Wiley State Park. Make your reservations today! Call for lodge reservation 606-889-2790 Group Code: GWRRA 6249. Limited number of rooms available.

August 17th—19th—The Blast 2023—Showroom in Danville. Make your hotel reservations today. See gwrraky.com for information on hotel.

FOR SALE



Mens WarmGear 12V jacket liner
X-Large, Mens WarmGear 12V
heated leather gloves X-Large and
a Dual temperature heat controller.

All for \$150

Contact Carl Girdler at 859-322-4481.



Trike Kit

Fits 2009 Honda Valkyrie

\$1,000—Cash Only

Contact Tom Reilly: 859-652-1484



2013 White Time Out Motorcycle Cargo Trailer

\$1500.00 OBO

Call or Text Deb@ 859-380-7703



FOR SALE



2012 Honda Goldwing—California Side Car Trike

2012—ESCA Pad Trailer

ASKING \$28,000

Triked as a new bike. We are second owners. Bought with 19,886 miles. As of 5/14/22 has 33,837 miles. Sirius radio, CB, Air Wings, cover for trailer, 2 covers for trike—full & half. Like new HJC Helmets—IS-Max-11 with J&M Elite Headsets & Lower cord Small & Large.

Contact Chris Davis (call or text): 859-332-9242

ADVERTISE HERE!



Hannah Lowen
General Manager

NEW RIFF
Distilling and Event Center

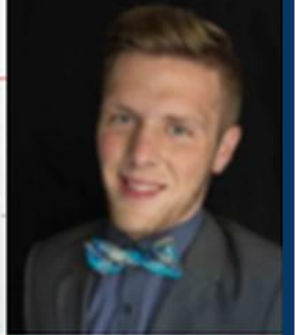
24 Distillery Way
Newport, KY 41073
859-261-7433
www.newriffdistilling.com

Robbie Hedger

REALTOR®

HUFF
REALTY
A Berkshire Hathaway Affiliate

Cell: 859.445.4477
Direct: 859.525.5711
Office: 859.525.7900
RHedger@HUFF.com
www.RobbieHedger.HUFF.com



60 Cavaller Boulevard, Florence, Kentucky 41042



SUPPLIES, INC.
512 Adela Avenue
Ludlow, Kentucky

HOWARD GAISER

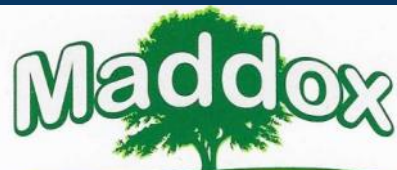
office: 859-491-6666
cell: 859-393-4591

Concrete

Building Materials

Trucking

Excavating



Garden Center & Landscaping
maddoxgardencenter.com

Phone (859) 371-6340
Fax (859) 371-8303

8430 Dixie Hwy. (U.S. 25)
Florence, KY 41042



Hours open Mon – Sat
9 am – 11 pm
Sundays 12 pm - 11 pm

**Legion Café
Post 4**

8385 US Hwy 42,
Florence, Ky 41042
Phone 859-817-0924

Northern Kentucky Chapter G GWRRA



NEXT GET-TOGETHER: Tuesday 10/4/22—American Legion, Post 4, 8355 US-42, Florence, KY 41042. Eat at 6pm. Meeting at 7pm.

Chapter Team Director – Randy and Kim Pommier

Newsletter Editor
Mary Eicher
3397 Blackberry Dr.
Erlanger, KY 41018