



Kentucky Chapter G

GWRRRA

"FRIENDS FOR FUN, SAFETY, AND KNOWLEDGE"

NOVEMBER 2022



Events



October Gathering—Union Restaurant & Gameyard

A district gathering was held at Union Restaurant & Gameyard. Those that were able to attend had a great time. We had lunch first, then many games were played: corn hole, bocce & ping pong to name a few. A few took a walk on the bridge over the Ohio river. Thanks to Don Price for setting up this great outing. The weather was perfect!





Once upon a time ... in that great year of two thousand and three,
We eagerly walked through the "G" door, unsure of what we'd see.
First we observed some friendly folks ... and tables of food galore,
So, needless to say we were thrilled ... we couldn't have asked for more.

But we didn't realize at the time that those folks would become so dear,
And the number of precious "G" friends would increase year after year.
And as for that "G" food ... it did more ... than just help us enjoy each ride,
Which explains why we may have gained a pound or two ... (or possibly 25)!

The number of trips we shared and enjoyed soon became too many to count,
And, matter of fact, they are still happening, of that there is no doubt.
Some rides included breathtaking views ... like those we took out West,
And, of course, our ride to Alaska will always remain ... one of our very best.

So many wonderful rides and events that simply took our breath away,
And the stories and fun of those special rides still bring us a smile today.
Though there were a couple scary times when our bike went down on its side,
Resulting in extremely serious injuries, not to our

bodies, but to our pride! ☹

Eventually there were even more activities that increased our fun, we feel,
Like camping, coffee chats, campfires, and sharing a breakfast meal.

And there was the year when an extra wheel attached itself to our bike,
And right before our very eyes ... our bike had morphed into a trike!

We said all this just to let you know that each of you have passed the test,
Of being counted as one of the precious ways that we have truly been blessed.
So for the rides, the friendships, the ice cream, the laughter, and the fun,
In our book ... the "G" and it's special members are absolutely NUMBER ONE!

Thanks for all the memories we have experienced with you in the past and
Thanks for all the memories we will experience with you in the future!
HAPPY THANKSGIVING!!!
Jack and Carol

Thanks for the Memories



November is traditionally a time of giving thanks and remembering events and people in our lives who have given us joy and happiness. These friends have departed this world, but their memories live on in our hearts. As you look at these faces, try to remember a time when these friends made you smile or laugh. Gone, but not forgotten...Thanks for the memories



TABLE OF CONTENTS

PAGE	SECTION
<u>2</u>	<u>Chapter Director's Report</u>
<u>3</u>	<u>Special Events</u>
<u>4</u>	<u>Assistant Chapter Director's Report</u>
<u>5</u>	<u>Membership Enhancement Report</u>
<u>5</u>	<u>Treasurer's Report</u>
<u>6</u>	<u>Rider Education</u>
<u>7</u>	<u>Social Secretary</u>
<u>8</u>	<u>Awards</u>
9	COY/Tech Talk
10	<u>Ride Coordinator Report</u>
11	<u>Chapter G Ride Schedule</u>
12	<u>Traveling Plaque/KY Chapter Meetings</u>
13	<u>Historical Highlights</u>
14	<u>Newsletter Editor</u>
15	<u>University Classes & KY District Events</u>
16	<u>Items for Sale</u>
18	<u>Advertisement</u>

TEAM G

OFFICERS

Chapter Team Directors cd@chapterg.org
Randy and Kim Pommier

Assistant Chapter Director acd@chapterg.org
Donita Nardi

Chapter Treasurer treasurer@chapterg.org
Luanne Williams

Chapter Membership Enhancement mec@chapterg.org
Jerry and Luanne Williams

Ride Coordinators ridecoordinator@chapterg.org
Chuck and Judy Norris

STAFF

50/50 Coordinators 50-50@chapterg.org
Dean & Kim Hedger

Awards Coordinator awards@chapterg.org
Gary Heil

Historian history@chapterg.org
OPEN

Motorist Awareness Coordinator map@chapterg.org
Charlie Hobbs

Newsletter Editor newsletter@chapterg.org
Mary Eicher

Pins & Patches pinsandpatches@chapterg.org
Judy Norris

Social Secretary social@chapterg.org
Rena Hobbs

Special Events specialevents@chapterg.org
Leah Cridlin

Technical Educator technical@chapterg.org
OPEN

Webmaster webmaster@chapterg.org
OPEN

2022 Couple of the Year cov@chapterg.org
John & Mary Eicher

2022 Individual of the Year ioy@chapterg.org
Steve Poat





Chapter Directors

Welcome to the season of holidays. Once Halloween is over, it becomes a very busy time of the year with friends and family. But let's talk about the happenings in October. The District ride was fun as we went to Gameyard in Jeffersonville Indiana. It was fun and the food was good. We played outdoor games like Corn Hole, and Bocce Ball. Although the ride down was chilly we had a great ride with some awesome scenery.

The trip to Amish country had to be one of the highlights of the year. We had 26 members who headed up north to Millersburg, Ohio. Some spent time shopping, others spent time riding the countryside. The rides were fantastic! The countryside was colorful and it gave you a feeling of admiration for the way the Amish live their lives. As usual, we spent a lot of time eating and we know that is what we do best. The evenings were spent learning more about each other and playing left-right-center.

The Christmas Party is set with Buffet Dinner at Kellie's Homestead Restaurant and an Elvis impersonator with an 11-piece band. The price this year is \$25.00 per person. This must be paid no later than November 15 to secure your seat. Please join us for an afternoon and evening of fun.

If you have put your bike up for the winter, please let Gary Heil know what your ending mileage is so we have an idea of how many miles the Chapter has ridden this year.

Hopefully, there will still be a few days of good riding left in the year to enjoy. Start making your Christmas list with new goodies for your ride.

Have a great Thanksgiving,



*Randy and Kim Pommier
Chapter Team Directors*

Special Events

Happy November, can you believe the year is winding down? This year has really gone by really, really fast.

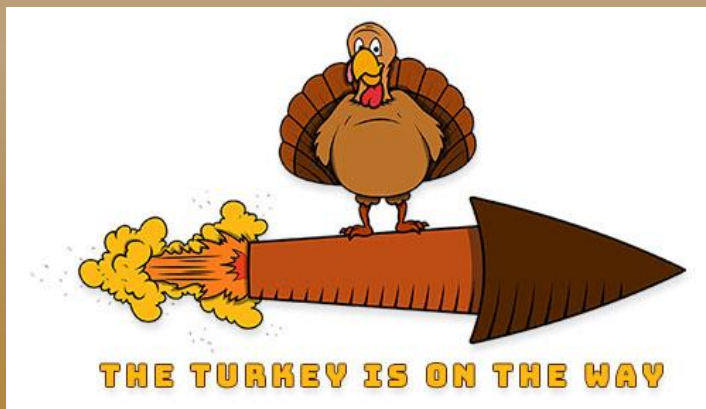
November is a time of thankfulness and I know Rick and I are thankful for all of our G friends. GWRRA has had a topsy turvy year in 2022. It looks like we have finally found a path to move forward and hopefully it will be a seamless transition. Thank you for your patience, flexibility and eagerness to listen and learn about the future of Chapter G and the KY District.

November 17th we are having our planning meeting for 2023. If you have a great idea for a Special Event, make sure to bring it with you to the meeting. If you are not able to attend, please forward your suggestions to me and I will make sure to share your suggestion.

The next big thing in Special Events is our Christmas party, which will be held on Saturday, December 3rd. We are back at Kellie's Homestead in Dry Ridge and Elvis will be in the house! Chapter business and our Dirty Santa gift exchange will begin at 3:00pm, a buffet dinner at 6:00pm and Elvis and his 11 piece band will start at 7pm. I can't wait to hear Blue Christmas and many more Elvis songs I love.

This year we will again collect toys for the Steinfeld Toy Foundation. Please bring your unwrapped gift to the party. Gifts for all ages are acceptable. For the Dirty Santa gift exchange, remember it is a \$20-\$25 limit. Guys bring a gift for the guys and gals bring a gift for the gals. My home is filled with gifts I have received from this crazy gift exchange. So be on the look out for that something special you hope to get stolen and passed around the room numerous times.

Remember special events are special because of your participation!



Leah Cridlin
Special Events Coordinator

Assistant Chapter Director



I was recently invited to a friend's house to share in an annual family event. It was a wonderfully unique day that I will not soon forget. One of the traditions shared at this event was a pumpkin upon which everyone was to write, with a sharp marker, what they were thankful for. The pumpkin would hold the family blessings until Thanksgiving when it would be made into a pie for the family feast.

With much thought, I took my turn at the pumpkin and happily scribed "Great Friends". Friends are very near and dear to my heart and Chapter G (and all of GWRRA) has given me ample amounts. I have been blessed to be a part of this organization and to get to know and love so many wonderful people. This Thanksgiving season I am thankful for all of you who have brought so much joy and meaning to my life.

Happy Thanksgiving!

Donita Nardi
Chapter Assistant Director



Membership

Hello G Friends,

We so enjoy the month of November – Thanksgiving is such a wonderful holiday to be shared with family and friends. We are so thankful for everything and everyone in our lives. We can't believe it is the middle of fall already. It is such a beautiful time of the year.

Some folks will still be riding and others will be storing their motorcycle/trike for the riding season. Whether you are riding or not, enjoy this special time of the year!!

Please contact us if any of your contact information has changed—we don't want you to miss anything. Also, if we are missing your birthday or wedding anniversary, please let us know so you can be recognized. If you have any questions or need assistance, please don't hesitate to contact us.

***Jerry and Luanne Williams
Chapter G
Membership Enhancement
Program Coordinators***

Treasurers

Hi Chapter G,

Congratulations to our winners from the October Get Together!! Kim Hedger won the \$10 "In Attendance Draw" this month. Chris Davis won 1st place of \$30, Rick Cridlin won 2nd place of \$18 and Troy Robinson won 3rd place of \$12.

Thank you to all who participated at the October Gathering.

We want to thank Dean & Kim for doing a great job selling tickets at our October Gathering!! If it wasn't for Dean and Kim selling our tickets and our wonderful members and guests purchasing our 50/30/20 tickets, we wouldn't have the opportunity to do the fun events that we do each year.

***Luanne Williams
KY District/Chapter Treasurers***



Riders Education

Fall riding can be some of the best we can experience, especially regarding practicing our riding skills. There are warm and cold temperatures, windy days, and rain and snow at any moment. There is an abundance of random road hazards in the many diverse types and sizes of animals hurrying to find food and mates before winter, leaves and grass showing up in unexpected places, and newly resurfaced roadways, all adding additional challenges to keep our vehicles in the lane where they belong. These challenges are overcome much more easily if we have been trained to deal with them effectively.

The GWRRA Rider Education program is still alive and well and being managed by some familiar faces. While it is true that GWRRA is officially closed, the Rider Education Program and the University are still operating as before. The Levels Program continues to see much activity, and now when the Members reach their next Level, they can receive the patches and pins to which they are entitled without cost. Even the Level IV application can be submitted free of charge.

After December, the training courses, seminars, and other learning programs of Rider Ed and the University, and including the HSI program (formerly the Medic First Aid program) will pick up where GWRRA left off in the new RPM Academy under the leadership of Susan Huttman and Lorrie Thomas. This organization will be its own entity with its own EIN number. It is a simple LLC with only volunteers. There are no paid positions. It will have its own insurance policy to cover the trainings that are presented by its instructors. Anyone who is qualified to teach the curriculum can be an instructor for RPM Academy, regardless of their affiliation with another group. Of course, there will be guidelines for the instructors to follow, and there will be recertification opportunities as before. Those who want to continue to teach can do so. Reimbursements for training expenses and other details are still being finalized. The RED Hat program will also be continued to recognize those trainers who deserve it.

The RPM Academy will have one centralized location from which everything is managed. They will continue the rider database and have complete access to the HSI information. Training events will also be managed so that all trainers get at least enough opportunities to keep their certifications.

On-bike courses will be offered for \$50.00 per bike, and HSI classes will be \$35.00 per person. Registration will be available on the RPM Academy website, complete with payment opportunity, or the option will exist to print out the application and return it by mail or fax. The courses will be open to anyone with the proper credentials to operate their equipment (drivers license with endorsement, etc., and the proper gear).

Rick Artmayer
KY District Educator



Social Secretary

Chapter G would like to wish a very Happy Birthday and a Happy Anniversary to our members who are celebrating in the month of November.

If you have a birthday or anniversary in November that I have missed, please contact me so I can update my roster.



11/14	Ray Conrad	11/25	Gilbert Webb
11/15	Ron Harper	11/28	Chuck McWilliams
11/17	Jackie Hartke	11/12	Angie Poat
11/22	Kathy Conrad	11/28	Stephen Poat
11/18	Darlene Heil		



11/3/88 Jeanne & Glen Fein

If you have any information that needs to be passed on to your Chapter G family, please contact me at: social@chapterg.org or phone me at (859) 534-1018. If I left anyone out please let me know.
Ride Safe!



Rena Hobbs
Social Secretary



Awards

This month we honor all Veterans. We thank you for your service and your sacrifices to protect our nation. This month, we also celebrate Thanksgiving. We give thanks for all we have and especially our family and friends.

Chapter G has two classes of yearly rewards; one is about miles ridden in the year and the other concerns attendance at the various events. Certificates are awarded to the three people who attend the most events sponsored by the Chapter. The person in charge of each event is tasked with furnishing a list of participants which are logged and tallied.

Mileage awards are presented for the three who have ridden the most miles in the year and one to the "average rider." The person who comes the closest to guessing the combined miles ridden by all the participants in the mileage contest without going over the total is awarded the SWAG Award (Scientific Wild A** Guess). Everyone is encouraged to take a guess even if you do not participate in the mileage contest.

While some may elect to ride year-round, others may store their motorcycles for the winter. Whenever you stop riding for the year, please record your odometer reading and send it to me. If you participated in the contest last year, I have your beginning reading. If I do not have your beginning odometer reading you can furnish it along with the ending reading. If you ride multiple motorcycles furnish the ending reading and beginning reading, if necessary, for each and advise for which bike it belongs. The deadline to submit data is 11:59 P.M., Sunday, January 8, 2023. You may email the information to me at awards@chapterg.org or give it to me at a meeting.

Names: _____

Ending Mileage: _____

SWAG guess – Rider: _____

SWAG guess – Co-Rider: _____

Have a Happy Thanksgiving,



*Gary, Darlene, Michelle &
Raven Heil
Awards Coordinator*



Couple of the Year

Fall is here and soon we will begin the selection process for the 2023 COY. Be sure to sign-up for the Christmas Party to see who is select as the COY for 2023.



John & Mary Eicher 2022 COY



Gech Talk

Here's the information that Charlie Thornton shared at the October gathering for the company who has Le-sure Lites parts.

Spuhler Auto Repair Ltd
2137 State Hwy 29
Elk Mound, Wisconsin 54739
Phone # 1.715.874.6162
Email: service@spuhlerauto.com
Web: www.spuhlerauto.com

Ride Coordinator

October has been a busy month for Chapter G. There are decorations to do with pumpkins, gourds, and mums. Candy to buy for Trick or Treaters and if you buy it too early you eat it all and must buy more. (The voice of experience talking here). The dinner ride was small with only 4 people going to the Family Diner in Walton.

A large group of us went to the Amish Country in October. We had bikes, trikes and cars riding the backroads of Holmes County. I must say there were gorgeous colors on the trees and the day was beautiful, cool with blue skies above. I am sure the bike riders would have said COLD. We stayed in the historic Hotel Millersburg in the heart of the Amish Country. The building and hotel are 175 years old with many of the rooms and hallways furnished with antiques. It also has a tavern and a parlor that we used for a lively game of LCR.

On Friday night we ate at the Farmstead in Berlin. It was delicious. We celebrated Troy Robinson's birthday with a piece of peanut butter pie. Troy said it was very good but since it was HIS birthday, we didn't ask him to share. Chuck had rides planned for Saturday to Lehman's Hardware store, backroads and Coblentz Chocolate. Some of the ladies went into Berlin to shop and then we all went to Der Dutchman for dinner. Again, it was a delicious Amish meal we all enjoyed. We had 26 people on this trip, and I think we all had a great time.

November is upon us, and we have plenty of events to keep us busy. First, is the dinner ride with plans being finalized this week. Next is Veteran's Day. We have many veterans in our Chapter and in our lives and we honor them this month and every month. We have our veterans to thank for the freedom we enjoy and must never take for granted. Thank you. We have the planning meeting to decide what wonderful adventures to have next year. That is November 17 at the main branch of the Boone County Library, so please plan on being there with ideas for us for next year. And then Thanksgiving comes around with families and friends gathering to give thanks for all that we have. And then to start off the Christmas season many of us are headed to LaComedia Dinner Theatre to see White Christmas.

So dear friends we want you to know how grateful we are to be part of this wonderful chapter and how grateful we are for your friendship, support and camaraderie.

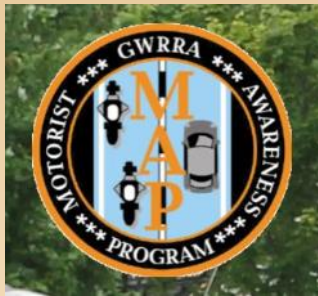
Happy Thanksgiving to you all.



*Chuck & Judy Norris
Ride Coordinators*



Chapter G Ride Schedule



Ice cream rides begin the first Wednesday of April and continue every Wednesday thru the summer. Meet at Heritage Bank (8751 US 42, Union) at 5:45. Depart 6pm sharp.

November 2022

- **1st — Chapter Get-together**—American Legion Post 4, 8385 US-42, Florence, KY 41042. Eat at 6.00pm meeting starts at 7pm.
 - **6th**—Daylight savings time ends.
 - **11th**—Veterans Day! Make sure you Thank A Veteran today.
 - **12th**—**Chapter Dinner Ride**—TBD (Belles 112 N Main St., Williamstown, KY 859-823-5140)
 - **17th**—**Planning Meeting for 2023—7pm**—Boone County Main Library, 1786 Burlington Pike. All are welcomed to attend and bring ideas for 2023.
 - **24th**— **Happy Thanksgiving!**
 - **27th**—**LaComedia Dinner Theater**—765 W. Central Ave., Springboro, OH. We will be doing the Brunch show of “White Christmas”. Arrive at 10:30am for seating and buffet starts at 11:15. Show is at 12:30pm. Cutoff for tickets is October 21st. Cost is \$54/person. Signup at meetings and pay Leah by October 15th.
 - **29th**—**Coordinators meeting**—TBD.
- **6th — Chapter Social Gathering**—American Legion 6pm—8pm. Please bring a dessert to share.
 - **21st**—Winter Begins
 - **25th**—**Merry Christmas to All!**
 - **31st**—Be Safe and have a Happy New Year!

January 2023

- **1st**—**Happy New Year Breakfast**— Cracker Barrel, 1131 Fashion Ridge Rd., Dry Ridge. Eat at 9am.
- **3rd — Chapter Social Gathering**—American Legion 6pm—8pm.
- **14th**—**Dinner Ride** — TBD.

Please be sure to visit the website for current ride schedule — [www.chapterg.org/ride schedule](http://www.chapterg.org/ride%20schedule)

December 2022

- **3rd — Chapter Christmas Party** — Location will be at Kellie’s Homestead Farmhouse, 1108 Fashion Ridge Rd., Dry Ridge, KY 41035. More details to follow as we get closer and plans are finalized. To signup & for more details contact Special Events Coordinator Leah Cridlin. Remember to bring an unwrapped toys for the Steinfeld toy drive. If you want to participate in the gift exchange, bring a \$20-\$25 gift wrapped, Man for Man, Woman for Woman.



Traveling Plaque

The Traveling Plaque promotes visitation between chapters. Each chapter has a chance to capture the plaque by attending the chapter meeting of the chapter who currently holds the plaque. Points are given at each meeting that your chapter attends. At the end of the year, at the KY Blast, the chapter with the most points, is awarded the plaque. Check on [KY District site](#) for updated information on meetings.

Chapter Meeting Schedule



Chapter A—Louisville

Meets the 2nd Saturday
Roosters, 10430 Shelbyville Road #7
Louisville, KY 40065
Eat at 11:00 am—Meet at 12:00pm



Chapter C—Lexington

Meets the 3rd Saturday
Roosters, 2640 Richmond Rd.
Lexington, KY 40509
Eat at 11:00am—Meet at 12:00pm



Chapter G — Northern KY

Meets 1st Tuesday
American Legion Post s4
8385 US Hwy 42
Florence, KY 41042
Social time 6:30pm—Meet at 7:00pm



Chapter K—Henderson

Meets 3rd Sunday
Golden Corral
1320 N Green St.
Henderson, KY 42420
Eat at 12:00pm—Meet 1:00PM (CT)



Chapter S — Elizabethtown

Meets 1st Sunday
Shoney's
1046 Executive Dr.
Elizabethtown, KY 42701
Eat at 4:00pm—Meet at 5:00pm



Chapter T — Paintsville

Meets 3rd Saturday
Giovanni's Pizza
261 Court St.,
Paintsville, KY
Eat at 5:00pm—Meet at 6:00pm



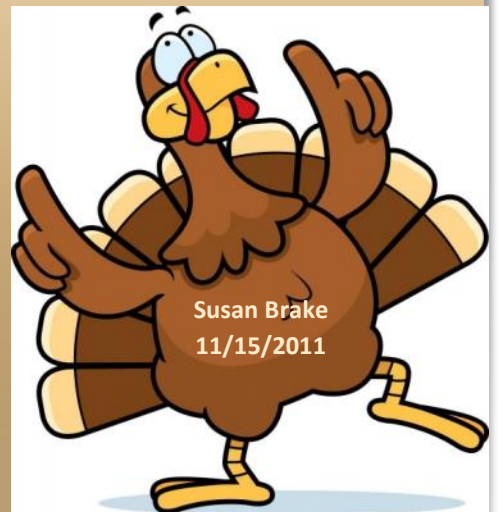
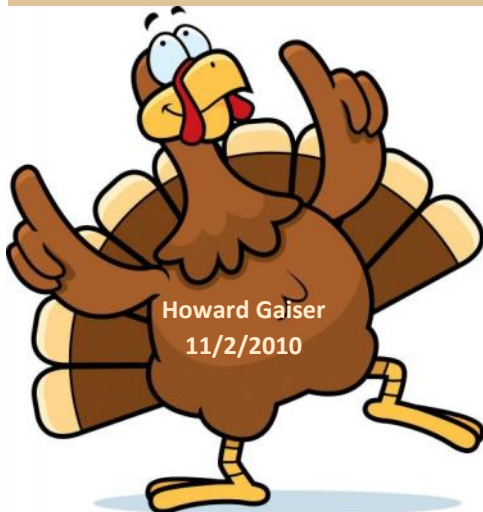
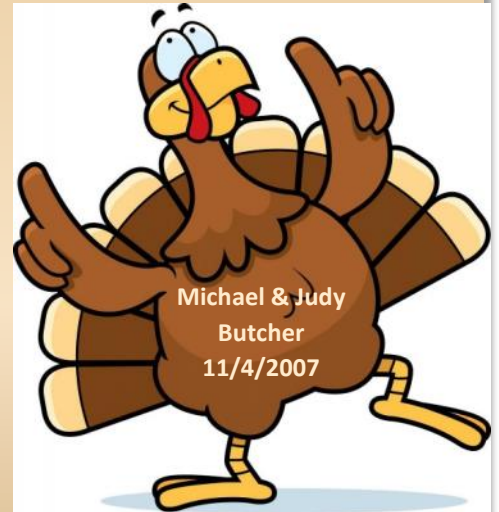
Chapter Y—Mayfield

Meets 1st Thursday
Majestic Family Restaurant
700 S 6th St
Mayfield, KY 42066
Eat at 6:00pm—Meet 7:00 (CT)



Historical Highlights

Congratulations to those who are celebrating their November
Chapter G Anniversaries



From the Editor

If you have item (s) for sale, that you would like to include in the newsletter, please send me a picture, price and info.

We continue to acknowledge a "G" member each month in the newsletter in the Spotlight. This acknowledgement can be about a recent accomplishment, graduation, course completed, etc. Please send the information and be sure to include pictures. Any article and pictures need to be sent by the 20th of the month.

This newsletter is published to keep our members informed about Chapter G. If there is anything you wish to see in the newsletter, that is currently not appearing, please let me know and we will take it into consideration.

Get your recipes ready. Starting January 2023, we will publish a few recipes each month. January, February and March please share your favorite soup or casserole dish. The weather is cold and a hot bowl of soup or a new casserole would really hit the spot.

It's not too early to sign up to be a sponsor for the newsletter. The cost is \$10 for a month. These funds will be used to help pay for the website hosting. 2023 sponsor article topic will be—Share your Recommendations. Share a podcast you recently listened to, a good book, movie, tv or streaming series. Let's see what everyone is binging on.



Mary Eicher
Newsletter Editor





Upcoming University Classes

November 19th 10:00am—2:30pm—Medic First Aid Class (MFA) - Hebron, KY. Please see registration form on www.gwrraky.org or click on link below for more information. Space is limited. Please contact [Leah Cridlin](#) if you have any questions.

[Click here for registration form.](#)

Upcoming KY District Events



June 2nd—3rd—Ride-in 2023 at Jenny Wiley State Park. Make your reservations today! Call for lodge reservation 606-889-2790 Group Code: GWRRA 6249. Limited number of rooms available.

August 17th—19th—The Blast 2023—Showroom in Danville. Make your hotel reservations today. See gwrraky.com for information on hotel.



FOR SALE



Mens WarmGear 12V jacket liner
X-Large, Mens WarmGear 12V
heated leather gloves X-Large and
a Dual temperature heat controller.

All for \$150

Contact Carl Girdler at 859-322-4481.



Trike Kit

Fits 2009 Honda Valkyrie

\$1,000—Cash Only

Contact Tom Reilly: 859-609-7569



2013 White Time Out Motorcycle Cargo Trailer

\$1500.00 OBO

Call or Text Deb@ 859-380-7703



FOR SALE



2012 Honda Goldwing—California Side Car Trike

2012—ESCA Pad Trailer

ASKING \$28,000

Triked as a new bike. We are second owners. Bought with 19,886 miles. As of 5/14/22 has 33,837 miles. Sirius radio, CB, Air Wings, cover for trailer, 2 covers for trike—full & half. Like new HJC Helmets—IS-Max-11 with J&M Elite Headsets & Lower cord Small & Large.

Contact Chris Davis (call or text): 859-332-9242

ADVERTISE HERE!



Hannah Lowen
General Manager

NEW RIFF
Distilling and Event Center

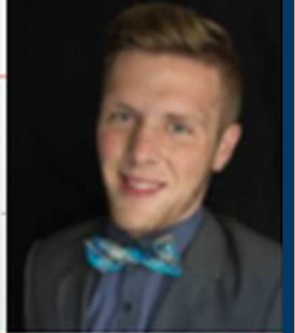
24 Distillery Way
Newport, KY 41073
859-261-7433
www.newriffdistilling.com

Robbie Hedger

REALTOR®

HUFF
REALTY
A Berkshire Hathaway Affiliate

Cell: 859.445.4477
Direct: 859.525.5711
Office: 859.525.7900
RHedger@HUFF.com
www.RobbieHedger.HUFF.com



60 Cavaller Boulevard, Florence, Kentucky 41042



SUPPLIES, INC.
512 Adela Avenue
Ludlow, Kentucky

HOWARD GAISER

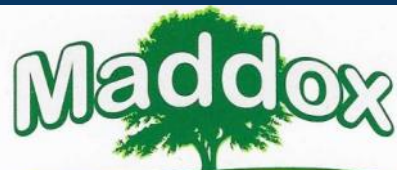
office: 859•491•6666
cell: 859•393•4591

Concrete

Building Materials

Trucking

Excavating



Garden Center & Landscaping
maddoxgardencenter.com

Phone (859) 371-6340
Fax (859) 371-8303

8430 Dixie Hwy. (U.S. 25)
Florence, KY 41042



Hours open Mon – Sat
9 am – 11 pm
Sundays 12 pm -11 pm

**Legion Café
Post 4**

8385 US Hwy 42,
Florence, Ky 41042
Phone 859-817-0924

Northern Kentucky Chapter G GWRRA



NEXT GET-TOGETHER: Tuesday 11/1/22—American Legion, Post 4, 8355 US-42, Florence, KY 41042. Eat at 6pm. Meeting at 7pm.

Chapter Team Director – Randy and Kim Pommier

Newsletter Editor
Mary Eicher
3397 Blackberry Dr.
Erlanger, KY 41018